



Mobil Glygoyle™ 460 and Mobil Engineering Services help Elevator Manufacturer Increase Gearbox Reliability and Saves US\$ 75,000 Annually

Elevator Gear Set

Gear & Gear Module Manufacturer

Incheon, Korea

Situation

Gear modules produced by this manufacturer were fitted in passenger elevators. These were lubricated by an ISO VG 320 mineral gear oil and micro-pitting was occurring due to poor lubrication. There were also complaints that the elevators were running noisily. In addition, there was an urgency to manage the cost of changing damaged gear sets frequently.

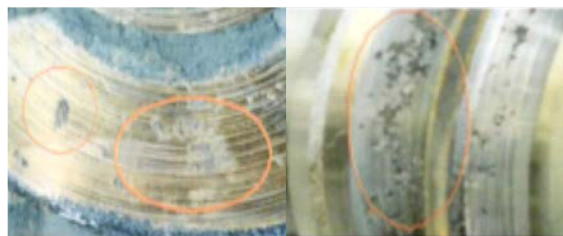
Recommendation

The ExxonMobil Lube Engineer analyzed the situation and recommended **Mobil Glygoyle™ 460** gear oil for the gearboxes. Mobil Engineering Services were also provided to help improve the productivity of the factory.

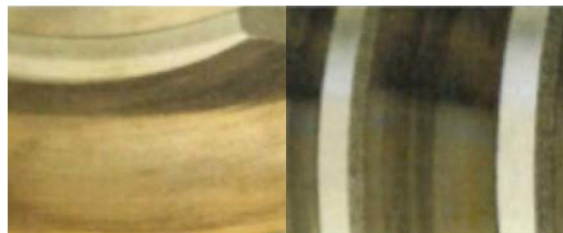
Result

After monitoring the performance of **Mobil Glygoyle 460** for 60 days, the ExxonMobil customer acknowledged significant improvements in the performance and condition of the gearboxes. Since then, the ExxonMobil customer has deployed **Mobil Glygoyle 460** gear oil in all their gearboxes and achieved an annual savings of US\$ 75,000. In summary, the benefits resulted from:

- Reduced micro-pitting and scratching even after 70,000 rotations (768 hours)
- 46% reduction in operating temperature (from 84.1°C to 45.1°C)
- Noise reduction in the operation of the escalators



After 30,000 rotations with the mineral oil as the lubricant, dispersed pitting on the wheel and worm gear surface can be seen.



Mobil Glygoyle 460 helps reduce micro-pitting, reduces operating temperature and excessive noise of the gearboxes.

For more information on Mobil SHC™ and other Mobil™ Branded Industrial Lubricants and services, call your local company representative or visit mobilindustrial.com

mobilindustrial.com

©2013 Exxon Mobil Corporation
Mobil, Mobil SHC and the Pegasus design are registered trademarks of Exxon Mobil Corporation or one of its subsidiaries.
POP 2012-322

The data and other contents of this Proof of Performance are based on the experience of a single customer. Actual results can vary depending upon the type of equipment used and its maintenance, operating conditions and environment, and any prior lubricant used.